

MAR 17 '24 MAR 17 1924

SANBORN MAP COMPANY
 POPULATION 1400
 PREVAILING WINDS S. & S.W.
 FOR WATER FACILITIES AND FIRE DEPARTMENT, SEE REPORT
HARRISON
 BOONE COUNTY ARKANSAS
 NOVEMBER 1923
 NEW YORK

Map Division MAR 27 1924 Library of Cong.

CLF 43100

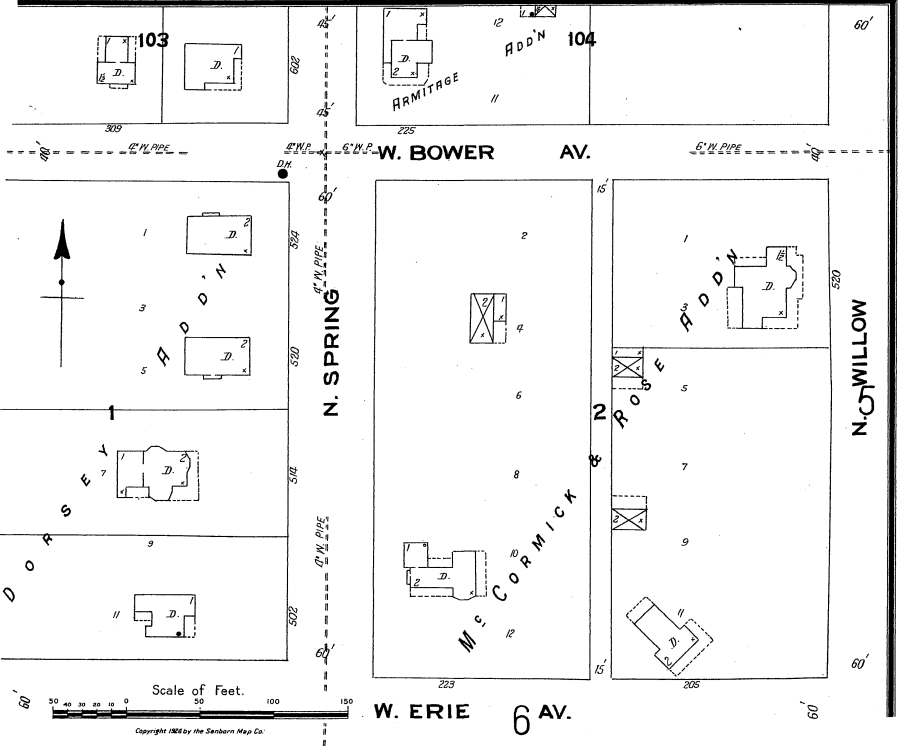
WATER FACILITIES:
 Water Works owned by city. Source of supply from spring. Gravity direct pressure system. Reservoir capacity 250,000 gals. elev. 600' above N. P. corner court yard. One centrifugal pump capacity 350 gals. per min. driven by 50 H.P. electric motor. One duplex F.P. capacity 350 gals. per min. driven by 50 H.P. oil engine. 10 miles water mains 7" to 8" - 12 double hydr. Average daily consumption 60,000 gals. gals. Gravity pressure 35 lbs. at Public Square. Fire pressure 40 lbs.

FIRE DEPT.:
 Volunteer, 4 men paid at ee. fire - American La France hose, chem & ladder truck, 50 gal. open top chem. hose, 1000' of canvas fire alarm by whistle at electric light plant & by telephone - fire bell mounted. Streets, graded & gravelled - Grades level in business section & hilly in residence section.

SCALE 600 FT. TO AN INCH

INDEX

STREETS	SECT.	STREET
Bower Ave., E.	100-224	Sycamore, N.
Center, W.	200-811	S.,
Central Ave., E.	100-125	Vine, N.
Cherry, N.	100-125	S.,
Chestnut, N.	300-608	Walnut, N.
College Ave., W.	100-125	S.,
East Ave.	100-225	Willow, N.
Erie Ave., E.	100-125	S.,
Hickory, S.	100-327	
Maple, S.	200-325	
Nicholson Ave., E.	100-209	
Olive,	210-305	
Pine, N.	100-125	
Prospect Ave., E.	100-125	
Ridge Ave., E.	100-125	
Rush Ave., E.	100-125	
South Ave., W.	100-125	
Spring, N.	100-125	
Stephenson Ave., E.	100-125	



Scale of Feet.
 Copyright 1923 by the Sanborn Map Co.